



# UPS series UPS 123607



## Valve Regulated Lead Acid Battery

Maintenance-Free Sealed Lead Acid Battery.  
Absorbent Glass Mat (AGM) technology for efficient gas recombination of up to 99%.

### General Design for Standby Power Applications

#### 【Design Life】

Up to 5 Years in Standby Service at 25°C  
Eurobat (20°C) : 3-5 YEARS STANDARD COMMERCIAL

#### 【Operating Temperature Range】

Nominal Operating Temperature : 25°C (77°F)  
Discharge : -15°C ~ 50°C (5°F~122°F)  
Charge: -15°C ~ 40°C (5°F~104°F)  
Storage: -15°C ~ 40°C (5°F~104°F)

#### 【Float Charging Voltage】

13.5 ~ 13.8 VDC/Unit at 25°C (77°F)

#### 【Equalization Charging Voltage】

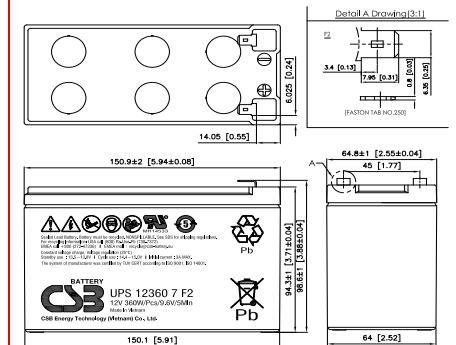
14.4 ~ 15.0 VDC/Unit at 25°C (77°F)

#### 【Self Discharge】

Less than 10% after 90 days, can be stored up to 6 months at 25°C (77°F);  
Fully recharging is required before usage, and charged sooner if stored at higher temperature than 25°C (77°F).

### Specification Design according with IEC 61056-1/2:2012

Nominal Voltage	12V (6 cells per unit)		
Nominal Capacity	360W @5min-rate to 9.60V per PCS @25°C (77°F)		
Weight	Approx. 2.00 Kg (4.41 lbs)		
Maximum Discharge Current	100/130 A (5sec)		
Internal Resistance	Approx. 20.90 mΩ		
Short Circuit Current	325A		
Maximum Charge Current	3.0 A		
Terminal types	F1/F2 terminal -Faston Tab 187/250		
Terminal tightening torque	--		
Container Material	ABS (UL 94-HB) & Flame Retardant (94-V0) available upon request		
Dimensions	Length (L)	150.9±2.0 mm	5.94±0.08 inch
	Width (W)	64.8±1.0 mm	2.55±0.04 inch
	Container Height (h)	94.3±1.0 mm	3.71±0.04 inch
	Overall Height (H)	98.6±1.0 mm	3.88±0.04 inch



### Constant Current Discharge Characteristics Unit: A (25°C, 77°F)

F.V/Time	2MIN	4MIN	5MIN	6MIN	8MIN	10MIN	15MIN	20MIN	30MIN	45MIN	60MIN	90MIN
1.60V	62.8	41.5	35.5	30.8	24.5	20.5	14.9	11.9	8.71	6.32	5.04	3.61
1.67V	55.7	39.2	34.0	29.7	24.0	20.2	14.8	11.8	8.66	6.29	5.02	3.60
1.70V	52.2	38.1	32.9	29.0	23.5	19.9	14.6	11.7	8.63	6.26	4.98	3.57
1.75V	47.1	35.0	30.7	27.2	22.4	19.1	14.3	11.5	8.50	6.20	4.95	3.56
1.80V	42.0	31.5	27.9	24.8	20.7	17.9	13.6	11.1	8.30	6.07	4.86	3.51
1.85V	36.6	27.2	24.2	21.9	18.5	16.3	12.6	10.4	7.83	5.77	4.64	3.36

### Constant Power Discharge Characteristics Unit: W (25°C, 77°F)

F.V/Time	2MIN	4MIN	5MIN	6MIN	8MIN	10MIN	15MIN	20MIN	30MIN	45MIN	60MIN	90MIN
1.60V	550	405	360	322	268	228	170	137	100	73.2	58.6	43.0
1.67V	522	390	352	315	263	225	169	136	100	72.9	58.4	42.5
1.70V	499	383	344	309	258	222	167	134	98	72.4	58.2	42.2
1.75V	462	365	326	295	249	214	164	132	96.8	71.6	57.8	41.9
1.80V	428	339	301	274	232	203	156	128	95.2	70.0	56.3	41.4
1.85V	374	298	272	248	211	186	144	120	91.6	67.4	54.2	39.8

Please refer to the official site for the latest rating confirmation. URL: [www.csb-battery.com](http://www.csb-battery.com)

Issued: 200927

### Sales Offices

希世比能源科技股份有限公司  
CSB Energy Technology Co., Ltd.

#### BUSINESS HEADQUARTERS

Tel: +886-2-2880-5600  
Fax: +886-2-2888-3300

#### USA OFFICE

Tel: +1-817-244-7777 / 1-(800)3-CSB-USA (272872)  
Fax: +1-817-244-4445

#### SHENZHEN OFFICE (CHINA)

Tel: +86-755-8831-6488/6775/6075  
Fax: +86-755-8831-6548

#### EUROPE (EMEA) OFFICE

Tel: +31(0)180-418-140  
Fax: +31(0)180-418-327

#### SHANGHAI OFFICE (CHINA)

Tel: +86-21-5046-1622/0833/0094  
Fax: +86-21-5046-1046

Recognized under UL 1989,  
and certified by ISO 9001, 14001, 45001, 50001.



#### TAIPEI OFFICE

Tel: +886-2-2880-5600  
Fax: +866-2-2888-3300

#### BEIJING OFFICE (CHINA)

Tel: +86-10-6597-8065/8165/8265  
Fax: +86-10-6597-8565